

# KombiSIGN 70 Signal Tower

## The Highlights for KombiSIGN 70

### 843 LED Permanent light element ultrabright



- Up to 20 times brighter than conventional LED elements
- Maximum brightness via intelligent LED control

See page 50

### 843 LED EVS element



- Attention-grabbing flickering light
- Extremely powerful signal effect
- Random sequence of light signals prevents acclimatisation effect

See page 51

### 843 LED Permanent light element multicolour



- 7 colours in one beacon
- Multiple status warnings can be signalled by one beacon
- High light intensity

See page 52

**NEW**

### 844 Vocal element



- 102 dB loud vocal element with excellent tone and sound quality
- Sound output level can be triggered externally

See page 55 + 56

### 844 Siren element with self-adjusting sound output



- Sound output is automatically adjusted to the background noise level
- Warning tone can be heard without being irritatingly loud

See page 57

**NEW**

### 840 Terminal element M12



- Quick and easy installation
- With practical M12 connector

See Seite 58

### 840 AS-Interface element



- LEDs indicate current status
- 31 or 62 addresses
- Available with standard or A/B technology

See page 59

### Machine Data Collection Systems (MDC Systems)



- Wireless based machine data collection
- Monitoring and counting system for multiple machines

See Page 12

### Manual Call Systems



- Improve the efficiency of production processes your operation
- Indicate status conditions and problems at the touch of a button

See Page 20

## Further Information

Further Information and applications for "KombiSIGN Signal Towers" can be found in the chapter "Systems" beginning on page 11.

# This is how you can assemble your KombiSIGN 70 signal tower

**► STEP 1**  
Select the required optical or audible elements in the correct voltage.

Many KombiSIGN highlights are also available (for details see page 46).



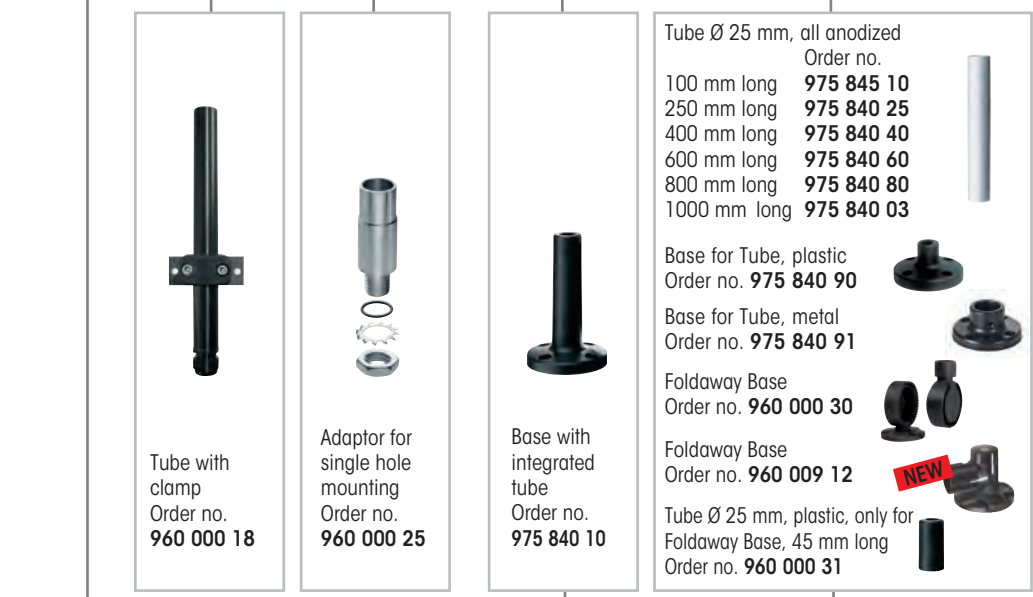
- Audible Signal Elements**
- Buzzer element
  - Siren element
  - Vocal element
- Optical Signal Elements**
- (LED) Permanent light
  - LED Permanent light ultrabright
  - (LED) Flashing light
  - LED EVS element
  - LED Blinking light
  - LED Rotating light
  - LED Permanent light element multicolour

**► STEP 2**  
Select the appropriate mounting option for your application.

**► STEP 3**  
Select the correct terminal element for your mounting option.



**► STEP 4**  
Where appropriate, select a base and the desired length (only for tube mounting).



**► STEP 5**  
Where appropriate, select the bracket and the contact box.

**TIP**

The Signal Devices Site on the Internet: [www.werma.com](http://www.werma.com)

With our new **signal tower configurator** you can put together your own individual signal tower.



# 840/843 Optical Signal Elements for KombiSIGN 70



Bracket (accessory)



Tube mounting (accessory)

- Clear signalling, even in unfavourable light conditions
- LED light elements have an extremely long life and low current consumption

## TECHNICAL SPECIFICATIONS:

<b>Dimensions</b> (Ø x Height):	70 mm x 65.5 mm		
<b>Lens:</b>	PC, transparent		
<b>Socket:</b>	Bayonet, BA15d, for bulb max. 5 W		
<b>Element seal:</b>	Pre-mounted with each module		
<b>Protection rating:</b>	IP 54		

<b>Permanent light element</b>	12-240 V AC/DC Bulb not included in assembly Life duration: Dependent upon the bulbs used		
--------------------------------	---	--	--

<b>LED Permanent light element</b>	24 V AC/DC	115 V AC	230 V AC
Current consumption:	< 30 mA	< 20 mA	< 20 mA
Life duration:	50,000 hrs		

<b>LED Permanent light element ultrabright</b>	24 V DC		
Current consumption:	Max. 195 mA		
Life duration:	Up to 50,000 hrs		
Technical specifications see page 51.			

<b>Flashing light element (Xenon)</b>	24 V DC	115 V AC	230 V AC
Current consumption:	125 mA	22 mA	15 mA
Life duration:	4 x 10 <sup>6</sup> flashes		
Reduced for AS-Interface:	80 mA		
Flash frequency:	C. 1 Hz		

<b>LED Flashing light element</b>	24 V DC		
Current consumption:	< 35 mA		
Life duration:	50,000 hrs		
Flash frequency:	C. 1 Hz (Double Flash)		

<b>LED EVS* element</b>	24 V DC		
Current consumption:	350 mA (red/yellow)	250 mA (green/clear/blue)	
Life duration:	50,000 hrs		
* EVS = Enhanced Visibility System			
Technical specifications see page 51.			

<b>LED Blinking light element</b>	24 V AC/DC	115 V AC	230 V AC
Current consumption:	25 mA	25 mA	25 mA
Life duration:	50,000 hrs		
Blink frequency:	C. 1 Hz		

<b>LED Rotating light element</b>	24 V AC/DC		
Current consumption:	40 mA		
Life duration:	50,000 hrs		
Rotation frequency:	C. 120 r.p.m.		

<b>LED Permanent Light Element multicolour</b>	24 V DC		
Life duration:	50,000 hrs		
Current consumption:	< 120 mA		
Possible colours:	Red, yellow, green, white, blue, violet, turquoise		
Technical specifications see page 52.			

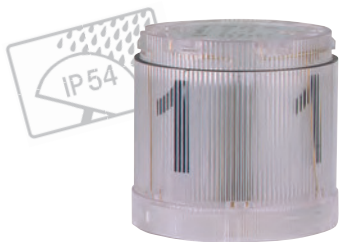
842 X10 55  
Class 2

See note on page 347

24 V



(LED) Permanent/  
Flashing light element



Permanent light element,  
clear with info



LED EVS element



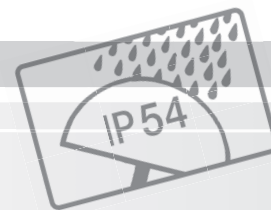
LED element



LED element multicolour



## ORDER SPECIFICATIONS OPTICAL ELEMENTS:



<b>Permanent light element</b>	12-240 V AC/DC		
red	840 100 00		
green	840 200 00		
yellow	840 300 00		
clear	840 400 00		
blue	840 500 00		

Bulb not included in assembly. Accessories see page 67.

<b>LED Permanent light element</b>	24 V AC/DC	115 V AC	230 V AC
red	843 100 55	843 100 67	843 100 68
green	843 200 55	843 200 67	843 200 68
yellow	843 300 55	843 300 67	843 300 68
clear	843 400 55	843 400 67	843 400 68
blue	843 500 55	843 500 67	843 500 68

<b>LED Permanent light element ultrabright</b>	24 V DC		
red	843 180 55		
green	843 280 55		
yellow	843 380 55		
clear	843 480 55		
blue	843 580 55		

<b>Flashing light (Xenon)</b>	24 V DC (ASI)	24 V DC	115 V AC	230 V AC
red	842 110 55	842 100 55	842 100 67	842 100 68
green	842 210 55	842 200 55	842 200 67	842 200 68
yellow	842 310 55	842 300 55	842 300 67	842 300 68
clear	842 410 55	842 400 55	842 400 67	842 400 68
blue	842 510 55	842 500 55	842 500 67	842 500 68

<b>LED Flashing light element</b>	24 V DC		
red	843 120 55		
green	843 220 55		
yellow	843 320 55		
clear	843 420 55		
blue	843 520 55		

<b>LED EVS element</b>	24 V DC		
red	843 140 55		
green	843 240 55		
yellow	843 340 55		
clear	843 440 55		
blue	843 540 55		

<b>LED Blinking light element</b>	24 V AC/DC	115 V AC	230 V AC
red	843 110 55	843 110 67	843 110 68
green	843 210 55	843 210 67	843 210 68
yellow	843 310 55	843 310 67	843 310 68
clear	843 410 55	843 410 67	843 410 68
blue	843 510 55	843 510 67	843 510 68

<b>LED Rotating light element</b>	24 V AC/DC		
red	843 130 55		
green	843 230 55		
yellow	843 330 55		
clear	843 430 55		
blue	843 530 55		

<b>LED Permanent light element multicolour</b>	24 V DC		
multicolour	843 450 55		

Further voltages on request.



## TECHNICAL DIAGRAMS:

see page 318 onwards



# LED Permanent Light Element ultrabright for KombiSIGN 70



Maximum brightness via intelligent LED control

- Up to 20 times brighter than conventional LED elements
- Extremely good visibility - even in direct sunlight
- Shock-proof and vibration-resistant
- Maximum brightness via intelligent LED control
- Low current consumption and maintenance-free



### TECHNICAL SPECIFICATIONS:

Life duration up to 50,000 hrs

Dimensions (Ø x Height):	70 mm x 65.5 mm
Lens:	PC, transparent
Seal:	Pre-mounted with each element



### ORDER SPECIFICATIONS:

Voltage	24 V DC
Current consumption	Max. 195 mA
red	<b>843 180 55</b>
green	<b>843 280 55</b>
yellow	<b>843 380 55</b>
clear	<b>843 480 55</b>
blue	<b>843 580 55</b>



### ADDITIONAL INFORMATION:

#### Sophisticated triggering

Thanks to its sophisticated triggering, the innovative LED element "ultrabright" is up to 20 times brighter than conventional LED elements - making it almost certainly the brightest permanent light that the world of signalling technology currently has to offer.

Further Information can be found in the chapter "General Information" beginning on page 354.



### TECHNICAL DIAGRAMS:

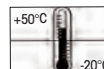
see page 319



The high level of brightness guarantees good visibility - even in direct sunlight

Class 2

See note on page 347





Patent approved



Integrated into the KombiSIGN Signal Towers, the EVS\* LED Element generates a highly attention-grabbing signal

- Attention-grabbing flickering light
- Extremely powerful signal effect
- Random sequence of light signals prevents acclimatisation effect
- For signalling extremely hazardous situations and the need for immediate action

Life duration up to 50,000 hrs

**i TECHNICAL SPECIFICATIONS:**

Dimensions (Ø x Height):	70 mm x 65.5 mm
Lens:	PC, transparent
Seal:	Pre-mounted with each element
Number of modules possible:	5, with 2-sided bracket max. 10

**ORDER SPECIFICATIONS:**

Voltage	24 V DC	24 V DC
Current consumption	350 mA	250 mA
red	<b>843 140 55</b>	-
green	-	<b>843 240 55</b>
yellow	<b>843 340 55</b>	-
clear	-	<b>843 440 55</b>
blue	-	<b>843 540 55</b>

**! ADDITIONAL INFORMATION:**

\* EVS = Enhanced Visibility System or Enhanced Visibility System  
Further Information can be found in the chapter "General Information" on page 352.

Please note the photosensitive epilepsy warning on page 352.

**TECHNICAL DIAGRAMS:**

see page 319

Class 2

See note on page 347



# 843

## LED Permanent Light Element multicolour for KombiSIGN 70



The LED permanent light element multicolour offers a life duration of up to 50,000 hrs

- Seven colours in one beacon
- Multiple status warnings can be signalled by one beacon
- Different colours can be triggered via the pins in the terminal element
- Positive and negative control logic
- The three basic colours (red/yellow/green) can be triggered using only two PLC outputs
- High light intensity

### **i** TECHNICAL SPECIFICATIONS:

Life duration  
up to 50,000 hrs

Dimensions (Ø x Height):	70 mm x 65.5 mm
Lens:	PC, transparent
Colours:	LED permanent
Possible Colours:	Red, yellow, green, white, blue, violet, turquoise
Seal:	Pre-mounted with each element
Number of modules possible:	Max. 3 (including Multicolour element)

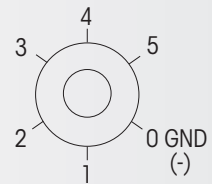
### **🛒** ORDER SPECIFICATIONS:

Voltage	24 V DC
Current consumption	< 120 mA
LED permanent light multicolour	<b>843 450 55</b>

### **⚠️** ADDITIONAL INFORMATION:

Simple external activation via the pins in the terminal element.

Pin 1	Pin 2	Pin 3	Function
24 V	-	-	Red
-	24 V	-	Green
24 V	24 V	-	Yellow
-	-	24 V	Blue
24 V	24 V	24 V	White
24 V	-	24 V	Violet
-	24 V	24 V	Turquoise



7 colours in one beacon: red, yellow, green, white, blue, violet and turquoise

### **📐** TECHNICAL DIAGRAMS:

see page 319



The Multicolour Element can be combined with up to 2 additional signal elements

See note  
on page 347





Bracket (accessory)



Tube mounting (accessory)

- Audible element sound output up to 105 dB

**i TECHNICAL SPECIFICATIONS:**

Life duration up to 5,000 hrs

<b>Dimensions (Ø x Height):</b>	see below		
<b>Lens:</b>	PC/ABS		
<b>Element seal:</b>	Pre-mounted with each module		
<b>Protection rating:</b>	IP 54 (Order no. 844 123 55 = IP 40)		

<b>Buzzer element</b>	24 V AC/DC	115 V AC	230 V AC
Current consumption:	25 mA		
Dimensions (Ø x Height):	70 mm x 72 mm		
Sound output:	85 dB		
Number/Tone type:	Continuous or pulse tone		

<b>Siren element</b>	24 V DC		
Current consumption:	150 mA		
Dimensions (Ø x Height):	70 mm x 79 mm		
Sound output:	105 dB		
Number/Tone type:	Continuous tone alternating		
Further Information:	No UL approval		

<b>Multi-functional Siren</b>	24 V AC/DC	115 V AC	230 V AC
Current consumption:	80 mA	40 mA	40 mA
Dimensions (Ø x Height):	70 mm x 72 mm		
Sound output:	100 dB, adjustable sound output		
Number/Tone type:	8 different tones		

<b>Multi-functional Siren, with external control</b>	24 V DC		
Current consumption:	80 mA		
Dimensions (Ø x Height):	70 mm x 72 mm		
Sound output:	100 dB, adjustable sound output		
Number/Tone type:	Number of tones dependent on the number of optical elements		
Tone triggering:	7 diff. tones can be triggered externally		

<b>Siren element with self-adjusting sound output</b>	24 V DC		
Technical specifications see page 57.			

<b>Vocal element</b>	24 V DC (max. 88 dB)		
Technical specifications see page 55.			

<b>NEW High output vocal element</b>	24 V DC (max. 102 dB)		
Further Information:	No UL approval		
Technical specifications see page 56.			

**ORDER SPECIFICATIONS AUDIBLE ELEMENTS:**

see next page

See note on page 347

24 V





Siren element  
844 123 55



Vocal element  
with up to 88 dB



High output vocal element  
with up to 102 dB



#### ORDER SPECIFICATIONS AUDIBLE ELEMENTS:

Buzzer element	24 V AC/DC 844 118 55	115 V AC 844 118 67	230 V AC 844 118 68
Siren element	24 V DC 844 123 55		
Multi-functional Siren	24 V AC/DC 844 126 55	115 V AC 844 126 67	230 V AC 844 126 68
Multi-functional Siren, with external control	24 V DC 844 126 95		
Siren element with self-adjusting sound output	24 V DC 844 810 55		
Vocal element	24 V DC (max. 88 dB) 844 840 55		
<b>NEW</b> High output vocal element	24 V DC (max. 102 dB) 844 860 55		



#### TECHNICAL DIAGRAMS:

see page 319 onwards



German utility  
model approved



The vocal element can be combined with up to 4 signal elements

- Plays customer-specific audio files in mp3 format (signal tones, music or spoken text)
- Enables clear instructions to be given in a range of foreign languages
- Outstanding tonal and sound quality
- Easy transfer of audio files and simple operation
- Setting of individual playlists and playback modi possible

Life duration  
up to 5,000 hrs

**i TECHNICAL SPECIFICATIONS:**

Dimensions (Ø x Height):	70 mm x 110 mm
Material:	PC
Number of signal elements:	Max. 4 additional signal elements possible
Sound output:	Adjustable, up to 88 dB
File Transfer:	Via USB connection and provided software
Possible data format:	Mp3 and wav files
Number of sequences:	15 files can be remotely triggered depending on the number of signal elements used or one sequence with max. 50 files
Suitable for:	Windows 2000 service pack 4, Windows XP, Windows Vista, Windows 7
Assembly:	Vocal Element, USB connection cable and software

**🛒 ORDER SPECIFICATIONS:**

Vocal element	24 V DC
Current consumption	< 500 mA
Vocal element	<b>844 840 55</b>

**📐 TECHNICAL DIAGRAMS:**

see page 319

See note on page 347





The vocal element can be combined with up to 4 signal elements

- 102 dB high output vocal element with excellent tone and sound quality
- Plays customer-specific audio files (signal tones, music and spoken text)
- Easy transfer of audio files and simple operation
- Sound output level can be triggered externally
- Creation of individual playlists and playback modes possible

**i TECHNICAL SPECIFICATIONS:**

Life duration up to 5,000 hrs


Dimensions (Ø x Height):	125 mm x 118 mm
Housing:	PC/ABS Blend
Lens:	PC
Number of signal elements:	Max. 4 additional signal elements possible
Sound output:	Adjustable, up to 102 dB
File Transfer:	Via USB connection and provided software
Possible data format:	Mp3 and wav files
Number of sequences:	15 files can be remotely triggered depending on the number of signal elements used or one sequence with max. 50 files.
Suitable for:	Windows 2000 service pack 4, Windows XP, Windows Vista, Windows 7, Windows 8
Assembly:	Vocal element, USB connection cable and software

**ORDER SPECIFICATIONS:**

Voltage	24 V DC
Current consumption	≤ 400 mA
Vocal element	<b>844 860 55</b>

**! ADDITIONAL INFORMATION:**

**Further installation examples:**

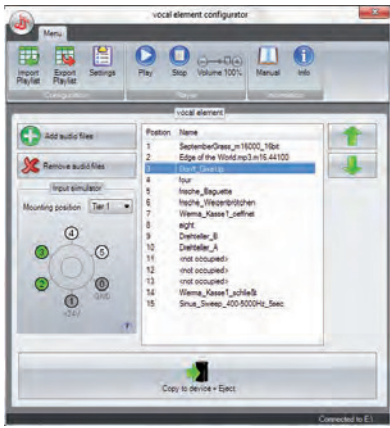


To ensure IP protection it is recommended that the vocal element is fitted with the sound outlet facing downwards.

Optimum distribution of sound is thus ensured.

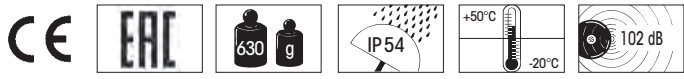
**TECHNICAL DIAGRAMS:**

see page 320



User-friendly software ensures easy transfer of audio files and simple operation

See note on page 347



# Siren Element with self-adjusting sound output for KombiSIGN 70



- Automatic sound output adjustment between 80 and 100 dB
- Sound output is c. 5 dB louder than the background noise level
- Continual measurement of the ambient noise level
- Ideal for applications with changing ambient sound levels

**i TECHNICAL SPECIFICATIONS:**

Dimensions (Ø x Height):	70 mm x 110 mm
Housing:	PC
Tone type:	Pulse tone
Tone frequency:	2.5 KHz
Sound output:	80 dB - max. 100 dB

Life duration up to 5,000 hrs

Loud enough yet not disturbing!

**🛒 ORDER SPECIFICATIONS:**

Voltage:	24 V DC
Current consumption:	< 150 mA
<b>844 810 55</b>	

**⚠️ ADDITIONAL INFORMATION:**

The siren element adjusts its sound output through continual measurement of the ambient noise level. The emitted tone is c. 5 dB louder than the background noise level. The warning signal can always be heard without being irritatingly loud for people in the sounder's vicinity.



**📐 TECHNICAL DIAGRAMS:**

see page 319

See note on page 347





# 840

# Terminal Elements for KombiSIGN 70

- Bayonet locking mechanism enables quick and easy assembly of the signal tower
- The ideal solution for every installation



Terminal element with cap

### **i** TECHNICAL SPECIFICATIONS:

Dimensions (Ø x Height):	See below	
Lens:	Terminal element: PA-GF, high-impact Cap: PC	
Fixing:	Base mounting Tube mounting, for tube Ø 25 mm Bracket mounting (accessory)	
Cable entry:	Cable diameter max. 14 mm	
Element seal:	Pre-mounted with each module	
Protection rating:	IP 54 (with cap)	
Number of modules possible:	Max. 5	

	<u>Tube mounting</u>	<u>Base mounting</u>
<b>Screw terminal</b>		
Dimensions (Ø x Height):	70 mm x 42,5 mm	70 mm x 42,5 mm
Connection:	Screw terminal max. 2,5 mm <sup>2</sup>	
Voltage:	12-240 V AC/DC	12-240 V AC/DC
	Incl. cap	Incl. cap and seal

<b>NEW</b>	<b>Terminal element M12</b>		
	Dimensions (Ø x Height):	70 mm x 56 mm	70 mm x 50 mm
	Connection:	M12 connector (8 pole)	M12 connector (8 pole)
	Voltage:	12-24 V DC	12-24 V DC
	Current carrying capacity:	≤ 2 A	≤ 2 A
		Incl. cap	Incl. cap and seal
		No UL approval	No UL approval

### **🛒** ORDER SPECIFICATIONS TERMINAL ELEMENTS:

	<u>Tube mounting</u>	<u>Base mounting</u>
Screw terminal	<b>840 080 00</b>	<b>840 085 00</b>
<b>NEW</b> Terminal element M12	<b>840 860 55</b>	<b>840 850 55</b>

### **🏠** ACCESSORIES:

Suitable accessories can be found on page 67.

### **📐** TECHNICAL DIAGRAMS:

see page 318



Terminal element with practical M12 connection socket in base

840 08X 00 See note on page 347



- LEDs indicate current status
- 31 or 62 addresses
- Available with standard or A/B technology
- Voltage supply switchable from internal bus supply to additional external voltage supply
- With addressing socket



Cable not included in assembly



LEDs display the current status

**i TECHNICAL SPECIFICATIONS:**

	Standard Slave	A/B-Slave
Number of addresses:	Max. 31	Max. 62
Number of signal elements:	Max. 4	Max. 3
IO-Code:	8 <sub>Hex</sub>	8 <sub>Hex</sub>
ID-Code:	F <sub>Hex</sub>	A <sub>Hex</sub>
ID2-Code:	N/A	E <sub>Hex</sub>
Outputs:	4 semiconductor relays	3 semiconductor relays
Approved in accordance with:	Spec. V 3.0	Spec. V 3.0

Specif. Power supply	
AS-Interface Element:	Via bus conduction
Operating voltage:	18.5 V ... 31.6 V according to the AS-Interface specification
Reverse battery protection:	Integrated
Watchdog:	Integrated
Additional external voltage:	24 V DC

	With internal add. voltage	With external add. voltage
Current carrying cap. $\Sigma$ I <sub>max</sub> :	200 mA	200 mA per signal element
Current consumption max:	210 mA	50 mA
Voltage at signal element:	20 V ... 30 V DC	24 V +/- 10%
Short circuit/overload protection:	Integrated	Pre-fuse M 1.6 A

**🛒 ORDER SPECIFICATIONS:**

AS-Interface Element	Standard Slave	A/B-Slave
	<b>840 830 55</b>	<b>840 810 55</b>

**⚠️ ADDITIONAL INFORMATION:**



The KombiSIGN Signal Tower 70 with AS-Interface Element are capable of total communication: Through simple integration of an AS-Interface Element the actuators are connected to the networking system Actuator-Sensor-Interface - this considerably reduces complex wiring.

The necessary power supply (supply via bus or external) can be selected with a switch. This element is mounted as the first tier of the individual signal tower directly on top of the terminal element. (Further Information see page 351).

**📐 TECHNICAL DIAGRAMS:**

see page 318

Class 2      See note on page 347      Standard Slave      A/B-Slave